



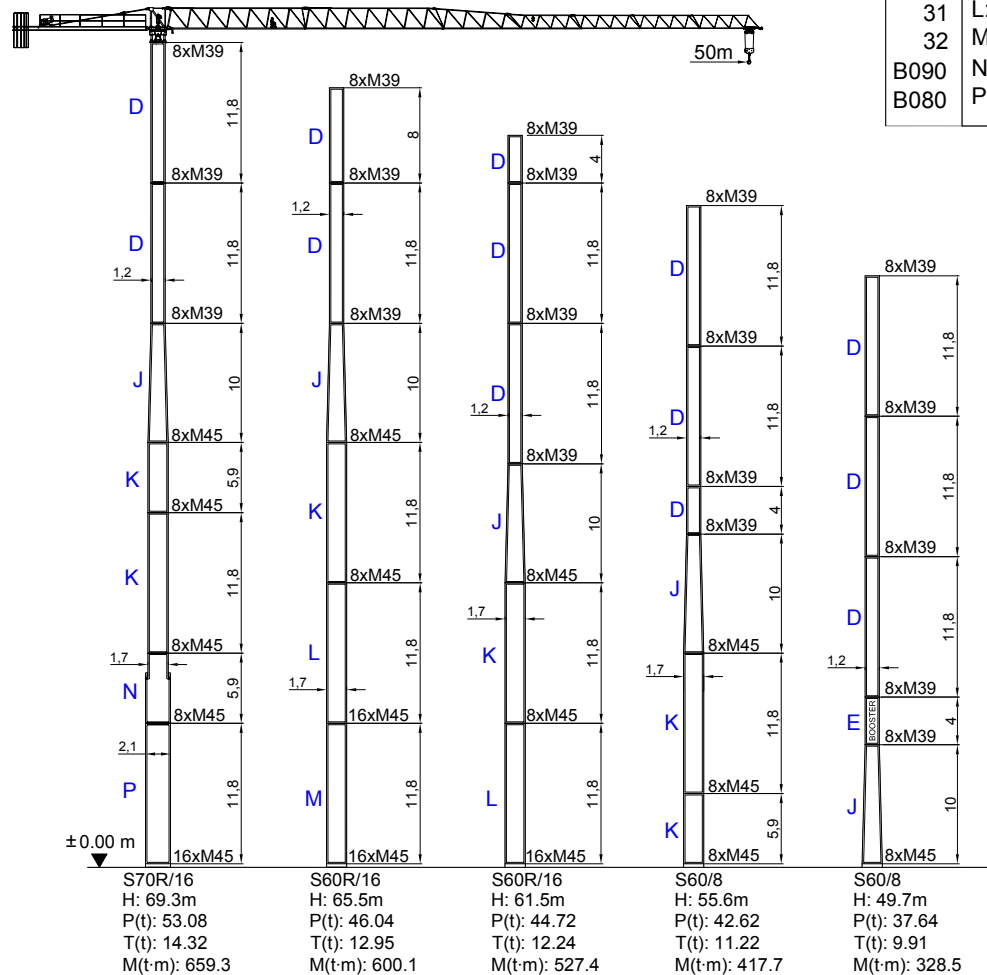


**Curvas de cargas**  
**Load diagrams**  
**Lastkurven**  
**Courbes de charges**  
**Curve di carico**

50 m 	18	20	24	25	26	28	30	33	35	37	39	40	43	45	48	50	m		
	2500	2500	2500	2500	2500	2293	2110	1878	1746	1629	1524	1476	1344	1266	1162	1100	Kg		
45 m 	9	12	15	15,3	18	21	24	27	30	33	35	38	40	43	45	48	50	m	
	4000	4000	4000	4000	3601	2995	2546	2200	1926	1702	1575	1409	1313	1186	1111	1010	950	Kg	
40 m 	18	20	24	25	26	26,5	28	30	33	35	37	39	40	43	45	m			
	2500	2500	2500	2500	2500	2500	2346	2160	1924	1789	1670	1563	1513	1379	1300	Kg			
35 m 	9	12	15	16,8	18	21	24	27	30	33	35	38	40	43	45	m			
	4000	4000	4000	4000	3700	3080	2620	2266	1984	1755	1625	1455	1357	1227	1150	Kg			
30 m 	18	20	24	25	26	28	29	30	33	35	m								
	2500	2500	2500	2500	2500	2500	2500	2410	2151	2003	1872		1754	1700	Kg				
30 m 	9	12	15	18	18,5	21	24	27	30	33	35	m							
	4000	4000	4000	4000	4000	3454	2946	2554	2243	1990	1846	1658		1550	Kg				
30 m 	18	20	24	25	26	26,9	28	30	m										
	2500	2500	2500	2500	2500	2500	2389	2200	Kg										
30 m 	9	12	15	17,2	18	21	24	27	30	m									
	4000	4000	4000	4000	3811	3175	2703	2339	2050	Kg									



Mástil / Reacciones  
Masts / Reactions  
Maste / Eckdrücke  
Mat / Réactions  
Torre / Reazioni

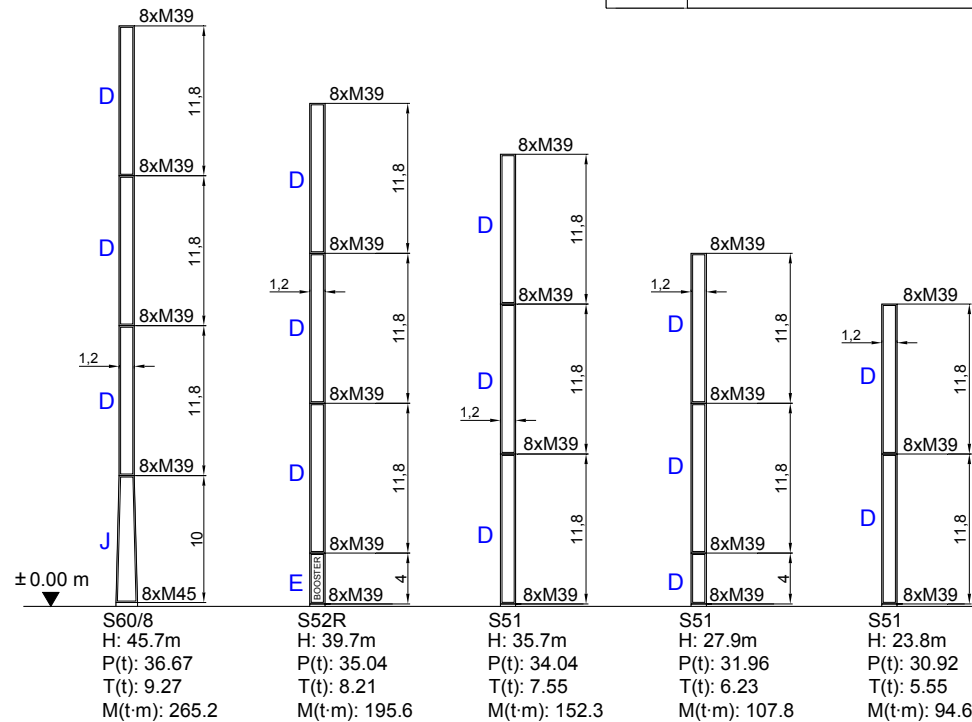


20	D: 50TL 1.20 M39/M39 8/8
25	E: BOOSTER/HEM 1.20 M39/M39 8/8
25	F: CAMPANA 4m 1.20/1.50 M39/M42 8/8
38	J: CAMPANA 10m 1.20/1.70 M39/M45 8/8
33	K: S17 1.70 M45/M45 8/8
31	L: S17 1.70 M45/M45 16/8
32	M: S17R 1.70 M45/M45 16/16
B090	N: S17-S21 M45/M45 8/8
B080	P: S21 M45/M45 16/8








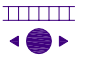
Mástil / Reacciones  
 Masts / Reactions  
 Maste / Eckdrücke  
 Mat / Réactions  
 Torre / Reazioni


20	D: 50TL 1.20 M39/M39 8/8
25	E: BOOSTER/HEM 1.20 M39/M39 8/8
25	F: CAMPANA 4m 1.20/1.50 M39/M42 8/8
38	J: CAMPANA 10m 1.20/1.70 M39/M45 8/8
33	K: S17 1.70 M45/M45 8/8
31	L: S17 1.70 M45/M45 16/8
32	M: S17R 1.70 M45/M45 16/16
B090	N: S17-S21 M45/M45 8/8
B080	P: S21 M45/M45 16/8








Mecanismos  
Mechanisms  
Antriebe  
Mécanismes  
Meccanismi


15 Hp (11,5 Kw)							
	m/min	8	29	58	4	15	30
	Kg	2500	2500	1000	4000	4000	2500
	Kw	11,5	11,5	11,5	11,5	11,5	11,5
	m/min	30 / 60			30 / 60		
	Kw	1,1 / 1,8			1,1 / 1,8		
	r.p.m	0,3	0,6	0,9	0,3	0,6	0,9
	Nm	1 x 65			1 x 65		
	m/min	20			20		
	Kw	2 x 2,2			2 x 2,2		

	400 V 50 Hz	31 kVA
---	----------------	--------


* 25 Hp (18,5 Kw)							
	m/min	8	31	62	4	16	32
	Kg	2500	2500	1500	4000	4000	2500
	Kw	18,5	18,5	18,5	18,5	18,5	18,5

\* Opcional / Optional / Opzionale /

 Elevación / Hoisting / Heben / Levage / Sollevamento

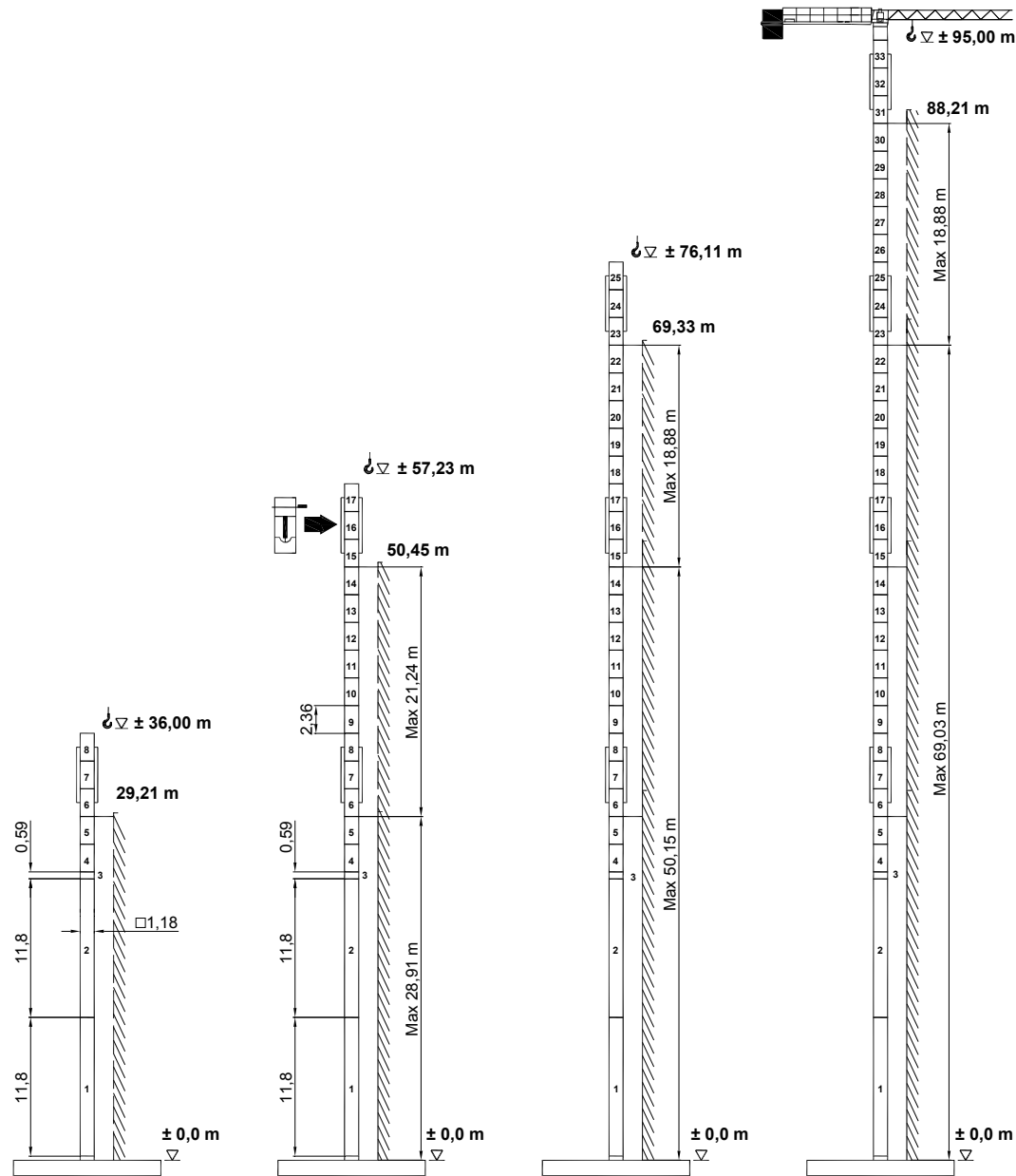
 Distribución / Trolleying / Katzfahren / Distribution / Dirituzione

 Orientación / Slewing / Schwenken / Orientation / Rotazione

 Traslacion / Travelling / Schienenfahren / Translation / Traslazione


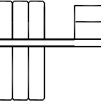


Telescopaje gruas  
 trepadoras  
 Climbing crane  
 Kletterkrane im  
 Gebäude  
 Télescopage sur  
 dalles  
 Gru in cavedio

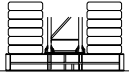




Bloque de contrapeso  
Counterweight blocks  
Gegengewichtsblöcke  
Bloc de contrepoid  
Blocco di contrappeso

	50 m		45 m			40 m		35 m		30 m	
	A	B	A	B	C	A	B	A	B	A	B
	3	2	3	1	1	3	1	2	2	2	1
	9700 Kg		9150 Kg			8300 Kg		7400 Kg		6000 Kg	

Bloque lastre de base  
Base ballast block  
Grundballastblöcke  
Bloc de lest de base  
Blocco di zavorra alla base

	24,60 m	28,60 m	36,60 m	40,60 m
3,8 x 3,8 m	38 t	45,6 t	76 t	76 t
4,5 x 4,5 m	-	-	-	-



		L (m)	W (m)	H (m)	Kg	
<b>Pluma tramo primero / Jib heel section</b> Ausleger-Anlenkstück / Pied de flèche Settore articolato di braccio		1	11,74	1	1,7	1544
<b>Elemento intermedio de pluma</b> Intermediate jib section / Ausleger-Zwischenstück Élément interm. de flèche / Spezzone di braccio		2	11,74	1	1,7	894
		3	6,5	1	1,31	488
		4	5	1	1,16	312
		5	5	1	1,16	223
		6	5	1	1,16	176
		7	5	1	1,16	154
	<b>Contrapluma / Counter-jib</b> Gegenausleger / Contre-flèche Controbraccio			11,49	0,28	1,65
<b>Elemento de torre / Tower section</b> Turmstück / Elément de mât Elemento di torre			11,8	1,2	1,38	3000
			4,0	1,2	1,38	1100
<b>Bloque de contrapeso / Counterweight blocks</b> Gegengewichtsblöcke / Bloc de contrepoids Blocco di contrappeso		A	2,94	0,30	1,25	2300
		B	2,94	0,18	1,25	1400
		C	1,70	0,18	1,25	850
<b>Bloque lastre de base / Base ballast block</b> Grundballastblöcke / Bloc de lest de base Blocco di zavorra alla base			4,4	1,2	0,3	3800
<b>Gancho y Carro / Hook and Trolley</b> Lasthaken - Laufkatze / Crochet - Chariot Gancio e Carrello			0,75	0,12	1,40	160
			0,96	1,10	0,62	120
<b>Cabeza de torre / Tower head</b> Turmspitze / Porte - flèche Testa di torre			2,94	1,8	1,7	3000
<b>Viga principal base / Main base beam</b> Hauptträger für fundamentkreuz Poutre de châssis de base Trave principale della base			5,72	0,67	0,65	1560
<b>Semiviga secundaria base / Half base beam</b> Halbträger für fundamentkreuz semipoutre de châssis de base Semitrave secundaria della base			2,77	0,45	0,665	1500

ESPECIFICACIONES SUJETAS A MODIFICACIONES SIN PREVIO AVISO.  
Specifications subject to modification without notice.  
Obiges kann ohne berstaendigung geaendert werden.  
Specifications susceptibles de modification sans avis préalable.  
Specifiche suscettibili di variazioni senza preavviso.

DECLINAMOS TODA RESPONSABILIDAD DERIVADA DE LA INFORMACION PROPORCIONADA.  
This information is supplied without liability.  
Sämtliche Angaben erfolgen ohne Gewähr.  
Ces renseignements sont sans garantie.  
Le indicazioni contenute si intendono salvo errori ed omissioni.



**Santana UA Group LLC**

Tel.: +38044 3320553. 3312332

[www.s-bud.com.ua](http://www.s-bud.com.ua)

e-mail [s-bud@i.ua](mailto:s-bud@i.ua)