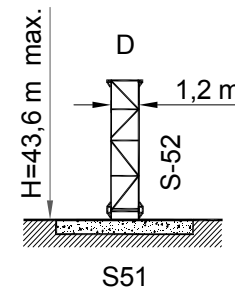
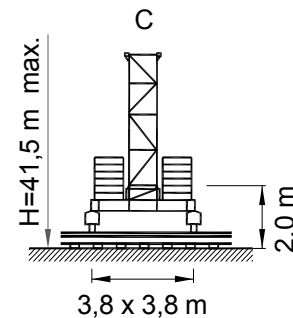
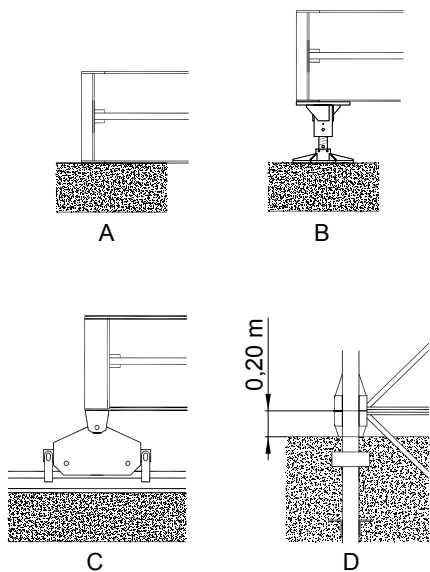
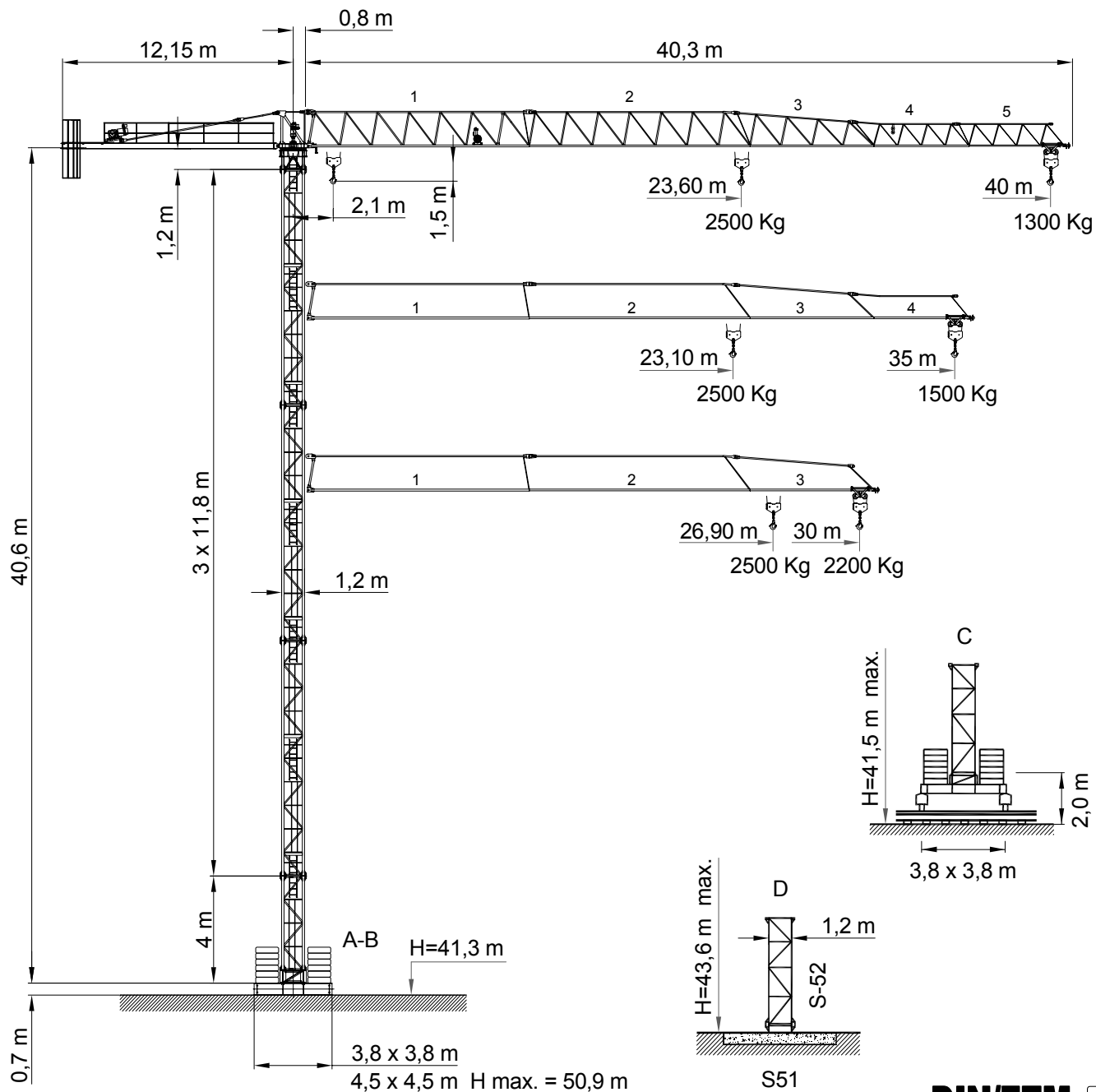




TL45/40 4T



Santana UA Group LLC

www.s-bud.com.ua

Tel.: +38044 3320553. 3312332 e-mail s-bud@i.ua

DIN/FEM CE

DIN 15018 FEM 1001-98
According to EC 98/37 instruction

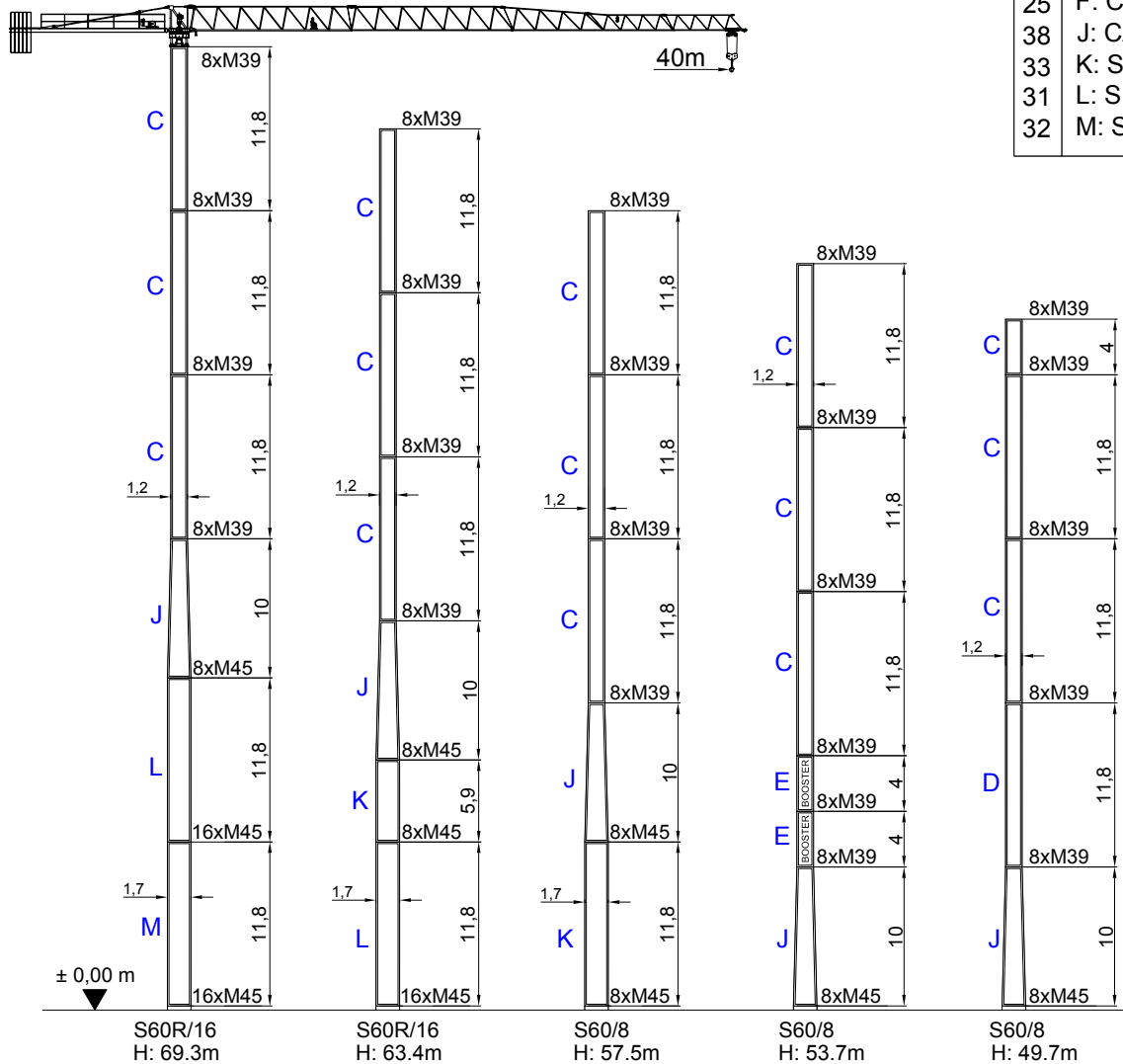


Curvas de cargas
Load diagrams
Lastkurven
Courbes de charges
Curve di carico

40 m 	10	12	14	16	18	20	23,6	24	25	26	28	30	33	35	37	39	40	m	
	2500	2500	2500	2500	2500	2500	2500	2455	2338	2230	2038	1873	1664	1544	1438	1343	1300	Kg	
35 m 	6	8	9	10	12	14	15	16	18	21	24	27	30	33	35	38	40	m	
	4000	4000	4000	4000	4000	4000	4000	3715	3228	2678	2270	1956	1706	1503	1387	1237	1150	Kg	
35 m 	10	12	14	16	18	20	23,1	24	25	26	28	30	33	35	m				
	2500	2500	2500	2500	2500	2500	2500	2389	2274	2169	1982	1821	1616	1500	Kg				
30 m 	6	8	9	10	12	14	14,7	16	18	21	24	27	30	33	35	m			
	4000	4000	4000	4000	4000	4000	4000	3631	3153	2614	2215	1907	1662	1463	1350	Kg			
30 m 	10	12	14	16	18	20	24	25	26	26,9	28	30	m						
	2500	2500	2500	2500	2500	2500	2500	2500	2500	2500	2389	2200	Kg						
30 m 	6	8	9	10	12	14	16	17,2	18	21	24	27	30	m					
	4000	4000	4000	4000	4000	4000	4000	4000	3811	3175	2703	2339	2050	Kg					



Mástil
Masts
Maste
Mat
Torre

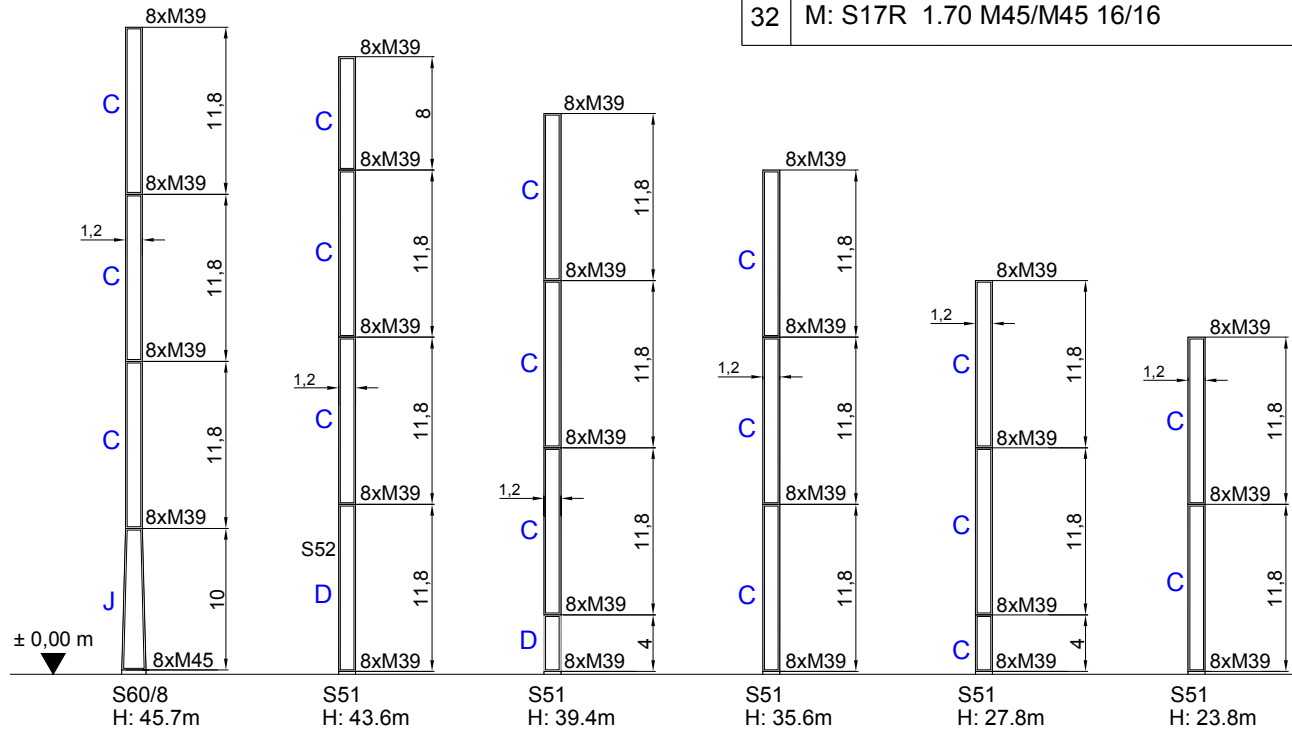


15	C: 45TL 1.20 M39/M39 8/8
20	D: 50TL 1.20 M39/M39 8/8
25	E: BOOSTER/HEM 1.20 M39/M39 8/8
25	F: CAMPANA 4m 1.20/1.50 M39/M42 8/8
38	J: CAMPANA 10m 1.20/1.70 M39/M45 8/8
33	K: S17 1.70 M45/M45 8/8
31	L: S17 1.70 M45/M45 16/8
32	M: S17R 1.70 M45/M45 16/16








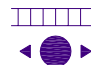
Mástil
Masts
Maste
Mat
Torre





15	C: 45TL 1.20 M39/M39 8/8
20	D: 50TL 1.20 M39/M39 8/8
25	E: BOOSTER/HEM 1.20 M39/M39 8/8
25	F: CAMPANA 4m 1.20/1.50 M39/M42 8/8
38	J: CAMPANA 10m 1.20/1.70 M39/M45 8/8
33	K: S17 1.70 M45/M45 8/8
31	L: S17 1.70 M45/M45 16/8
32	M: S17R 1.70 M45/M45 16/16






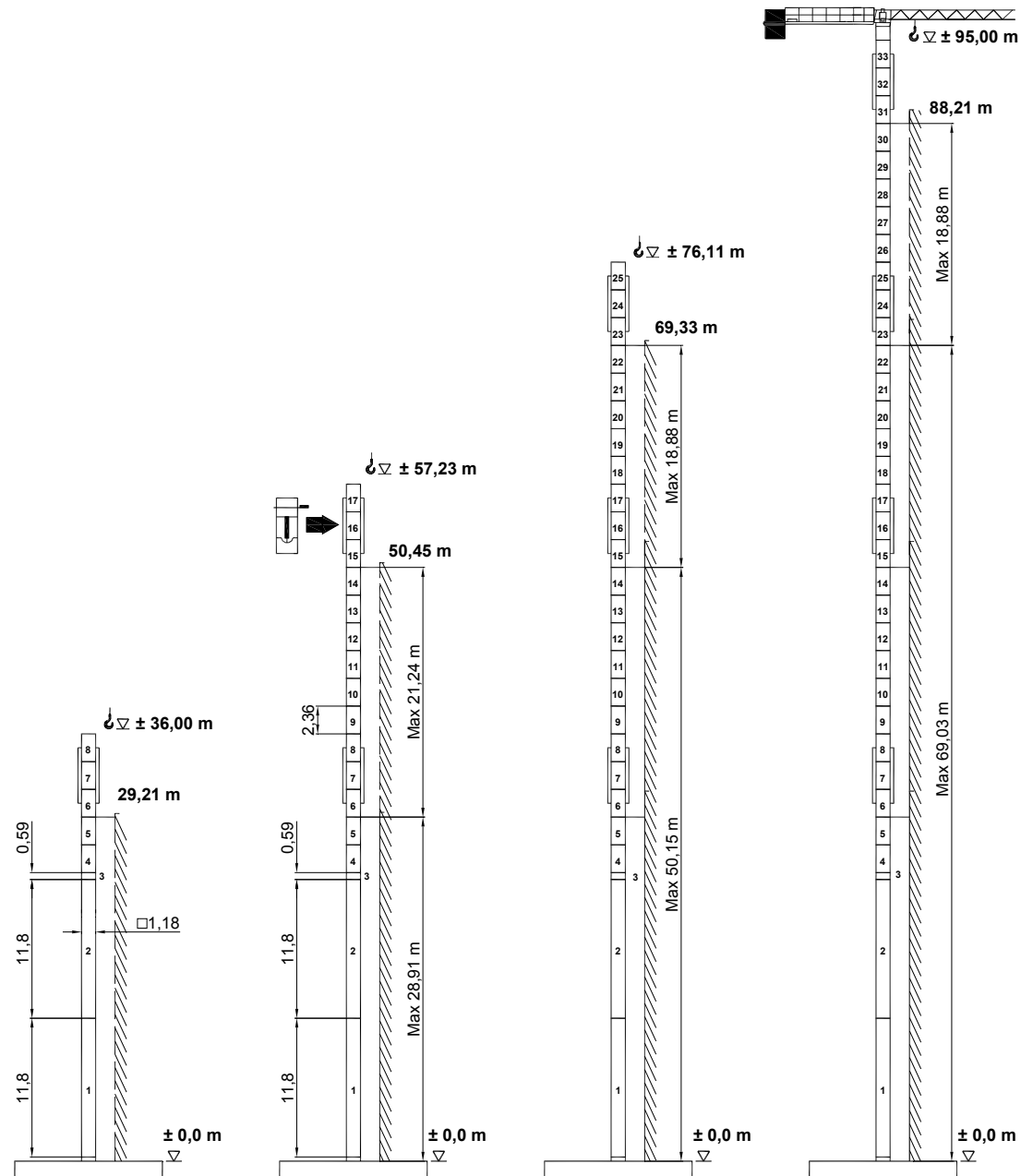
Mecanismos
Mechanisms
Antriebe
Mécanismes
Meccanismi

15 Hp (11,5 Kw)							
	m/min	8	29	58	4	15	30
	Kg	2500	2500	1000	4000	4000	2500
	Kw	11,5	11,5	11,5	11,5	11,5	11,5
	m/min	30 / 60			30 / 60		
	Kw	1,1 / 1,8			1,1 / 1,8		
	r.p.m	0,3	0,6	0,9	0,3	0,6	0,9
	Nm	1 x 65			1 x 65		
	m/min	20			20		
	Kw	2 x 2,2			2 x 2,2		

-  Elevación / Hoisting / Heben / Levage / Sollevamento
-  Distribución / Trolleying / Katzfahren / Distribution / Distributions
-  Orientación / Slewing / Schwenken / Orientation / Rotazione
-  Traslacion / Travelling / Schienenfahren / Translation / Traslazione


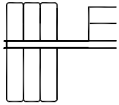
	400 V 50 Hz	24 kVA
---	----------------	--------

Telescopaje gruas
treptadoras
Climbing crane
Kletterkrane im
Gebäude
Télescopage sur
dalles
Gru in cavedio

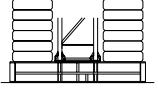




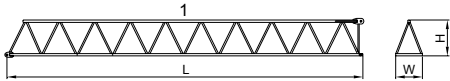
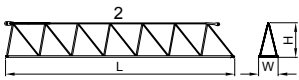
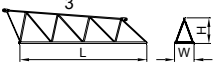
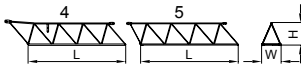
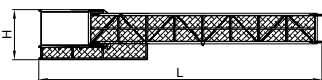
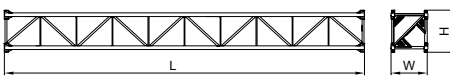
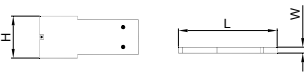
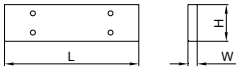

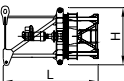
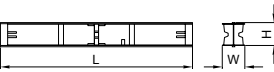
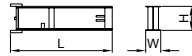
Bloque de contrapeso
Counterweight blocks
Gegengewichtsblöcke
Bloc de contrepoid
Blocco di contrappeso

	40 m		35 m			30 m	
	A	B	A	B	C	A	B
	2	2	2	1	1	2	1
	7400 Kg		6850 Kg			6000 Kg	

Bloque lastre de base
Base ballast block
Grundballastblöcke
Bloc de lest de base
Blocco di zavorra alla base

	18,60 m	24,60 m	36,60 m	40,60 m
3,8 x 3,8 m	38 t	38 t	68,4 t	76 t
4,5 x 4,5 m	30,4 t	30,4 t	53,2 t	60,8 t



			L (m)	W (m)	H (m)	Kg
Pluma tramo primero / Jib heel section Ausleger-Anlenkstück / Pied de flèche Settore articolato di braccio		1	11,74	1	1,7	1544
Elemento intermedio de pluma Intermediate jib section / Ausleger-Zwischenstück Élément interm. de flèche / Spezzione di braccio		2	11,74	1	1,7	894
		3	6,5	1	1,31	488
		4	5	1	1,16	312
		5	5	1	1,16	223
						
Contrapluma / Counter-jib Gegenausleger / Contre-flèche Controbraccio			11,49	0,28	1,65	2152
Elemento de torre / Tower section Turmstück / Elcment de mât Elemento di torre			11,8	1,2	1,38	3000
			4,0	1,2	1,38	1100
Bloque de contrapeso / Counterweight blocks Gegengewichtsblöcke / Bloc de contrepoids Blocco di contrappeso		A	2,94	0,30	1,25	2300
		B	2,94	0,18	1,25	1400
		C	1,70	0,18	1,25	850
Bloque lastre de base / Base ballast block Grundballastblöcke / Bloc de lest de base Blocco di zavorra alla base			4,4	1,2	0,3	3800
Gancho y Carro / Hook and Trolley Lasthaken - Laufkatze / Crochet - Chariot Gancio e Carrello			0,75	0,12	1,40	160
			0,96	1,10	0,62	120
Cabeza de torre / Tower head Turmspitze / Porte - flèche Testa di torre			2,94	1,8	1,7	3000
Viga principal base / Main base beam Hauptträger für fundamentkreuz Poutre de châssis de base Trave principale della base			5,72	0,67	0,65	1560
Semiviga secundaria base / Half base beam Halbträger für fundamentkreuz Semipoutre de châssis de base Semitrave secundaria della base			2,77	0,45	0,665	1500

ESPECIFICACIONES SUJETAS A MODIFICACIONES SIN PREVIO AVISO.
Specifications subject to modification without notice.
Obiges kann ohne berstaendigung geaendert werden.
Specifications susceptibles de modification sans avis préalable.
Specifiche suscettibili di variazioni senza preavviso.

DECLINAMOS TODA RESPONSABILIDAD DERIVADA DE LA INFORMACION PROPORCIONADA.
This information is supplied without liability.
Sämtliche Angaben erfolgen ohne Gewähr.
Ces renseignements sont sans garantie.
Le indicazioni contenute si intendono salvo errori ed omissioni.



Santana UA Group LLC

Tel.: +38044 3320553. 3312332

www.s-bud.com.ua

e-mail s-bud@i.ua