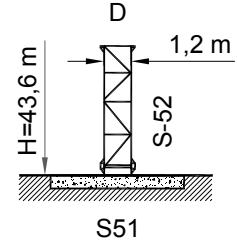
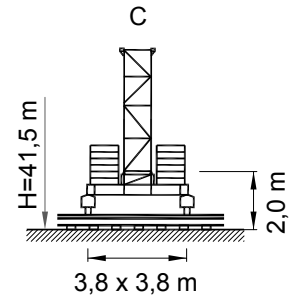
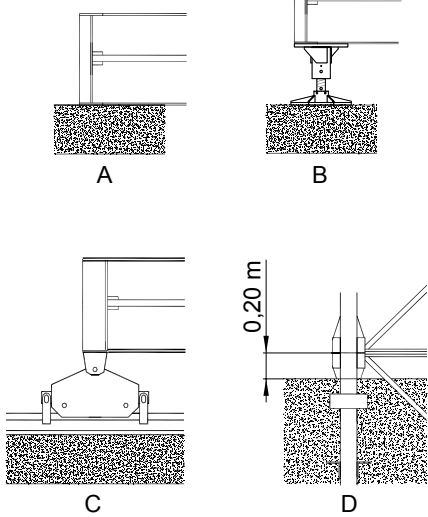
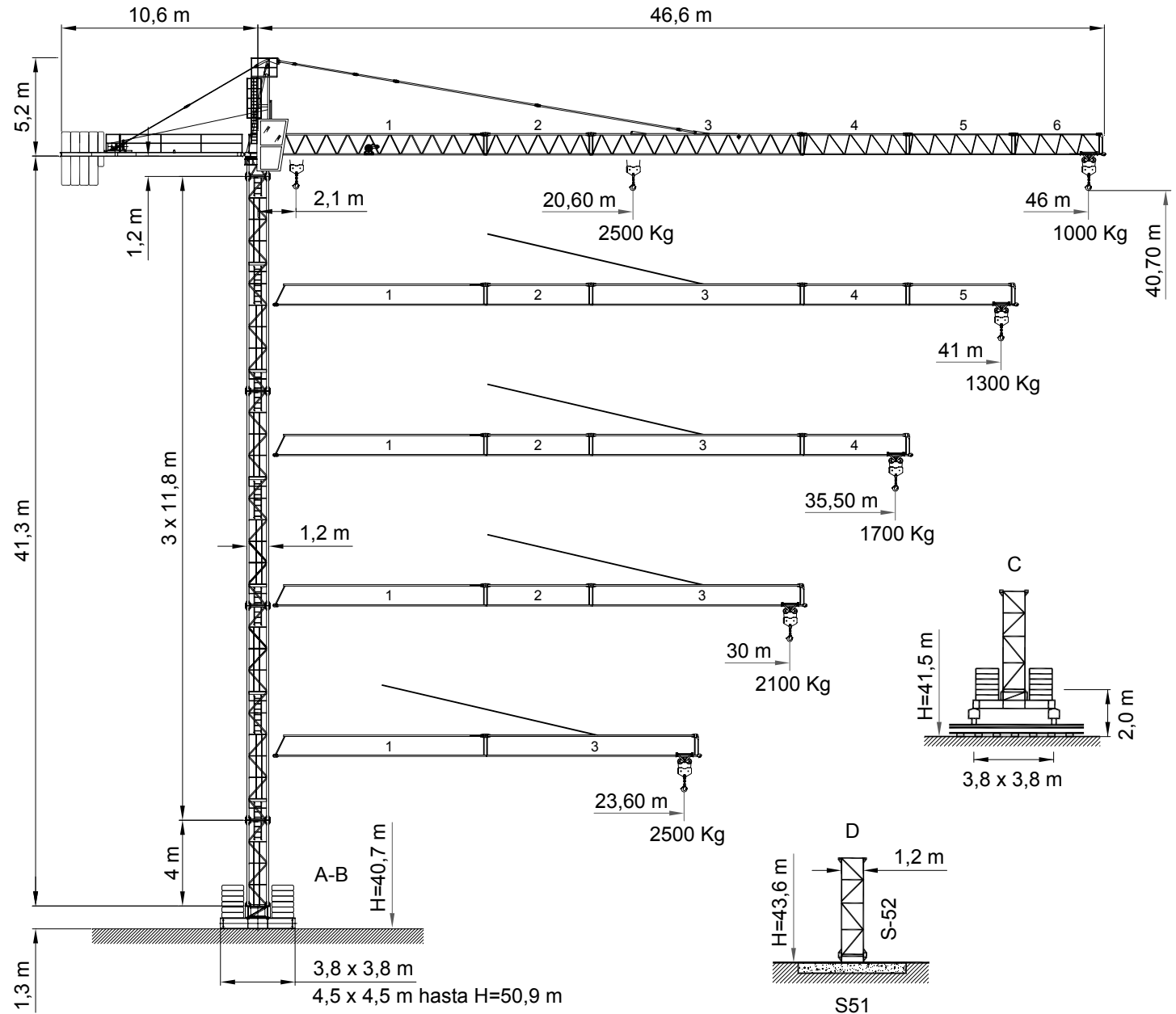




S-46 4T



DIN/FEM CE

UNE 58-101-92 FEM 1001-87
According to EC 98/37 instruction

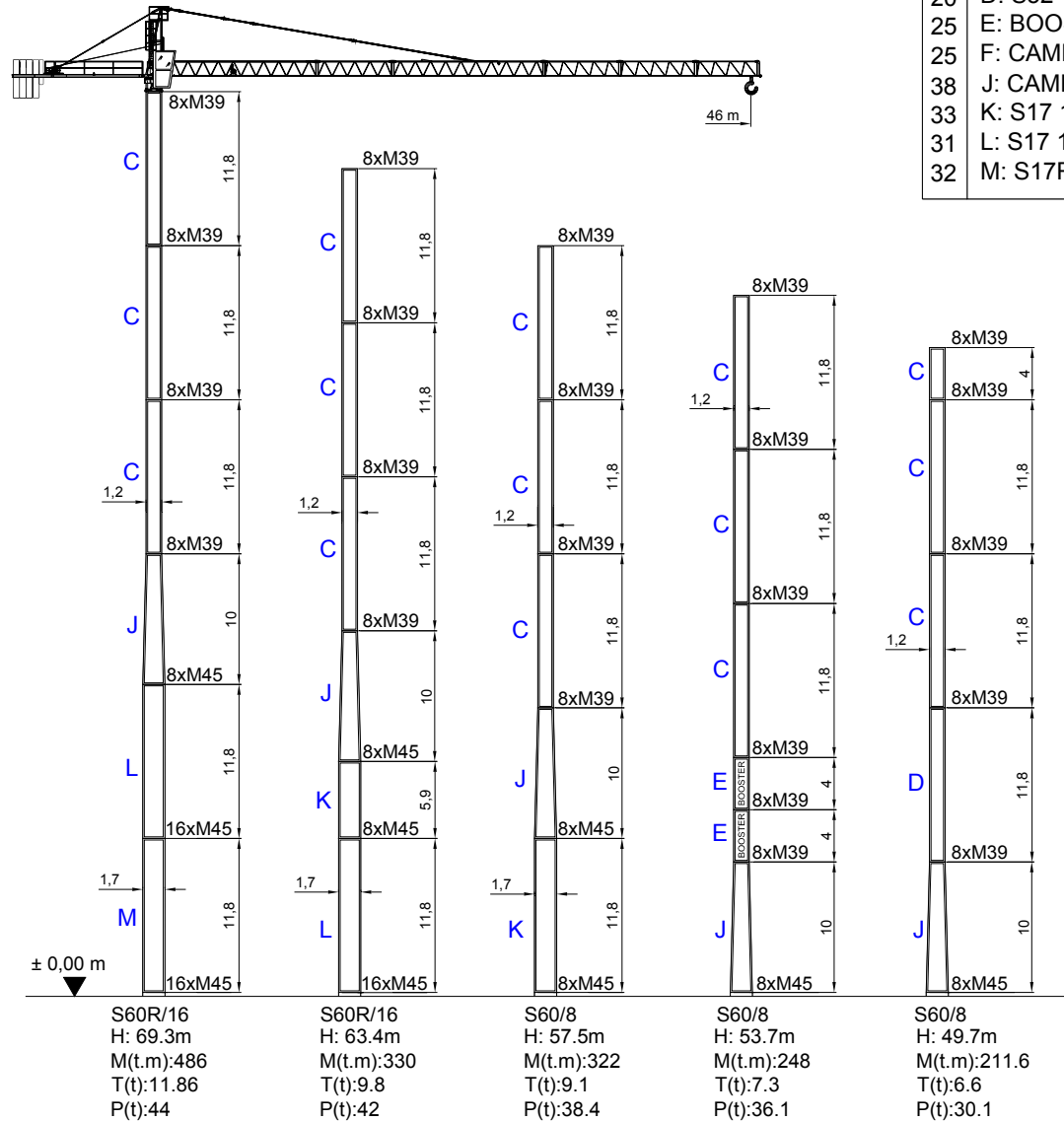


Curvas de cargas
Load diagrams
Lastkurven
Courbes de charges
Curve di carico

46 m 	12	13,5	15	18	20,6	21	23,6	27	30	33	35,5	39	41	43	46	m	
	2500	2500	2500	2500	2500	2460	2110	1840	1630	1560	1420	1300	1200	1100	1000	Kg	
41 m 	12	12,8	13,5	15	18	21	23,6	27	30	33	35,5	39	41	43	46	m	
	4000	4000	3500	2970	2580	2270	2030	1750	1550	1360	1220	1050	980	920	850	Kg	
35,5 m 	12	13,5	15	18	21	23,6	23,8	27	30	33	35,5	39	41	m			
	2500	2500	2500	2500	2500	2500	2500	2180	1930	1730	1560	1420	1300	Kg			
30 m 	12	13,5	14,5	15	18	21	23,6	27	30	33	35,5	39	41	m			
	4000	4000	4000	3760	3060	2670	2370	2030	1800	1580	1450	1250	1150	Kg			
30 m 	12	13,5	15	18	21	23,6	25,7	27	30	33	35,5	m					
	2500	2500	2500	2500	2500	2500	2500	2370	2110	1890	1700	Kg					
30 m 	12	13,5	15	15,2	18	21	23,6	27	30	33	35,5	m					
	4000	4000	4000	4000	3150	2760	2460	2170	1890	1690	1550	Kg					
30 m 	12	13,5	15	18	21	23,6	26,5	27	30	m							
	2500	2500	2500	2500	2500	2500	2500	2500	2100	Kg							
23,6 m 	12	13,5	15	15,4	18	21	23,6	27	30	m							
	4000	4000	4000	4000	3240	2750	2550	2260	2000	Kg							
23,6 m 	12	13,5	15	18	21	23,6	m										
	2500	2500	2500	2500	2500	2500	Kg										
23,6 m 	12	13,5	15	15,6	18	21	23,6	m									
	4000	4000	4000	4000	3800	3180	2650	Kg									



Mástil / Reacciones
Masts / Reactions
Maste / Eckdrücke
Mat / Réactions
Torre / Reazioni

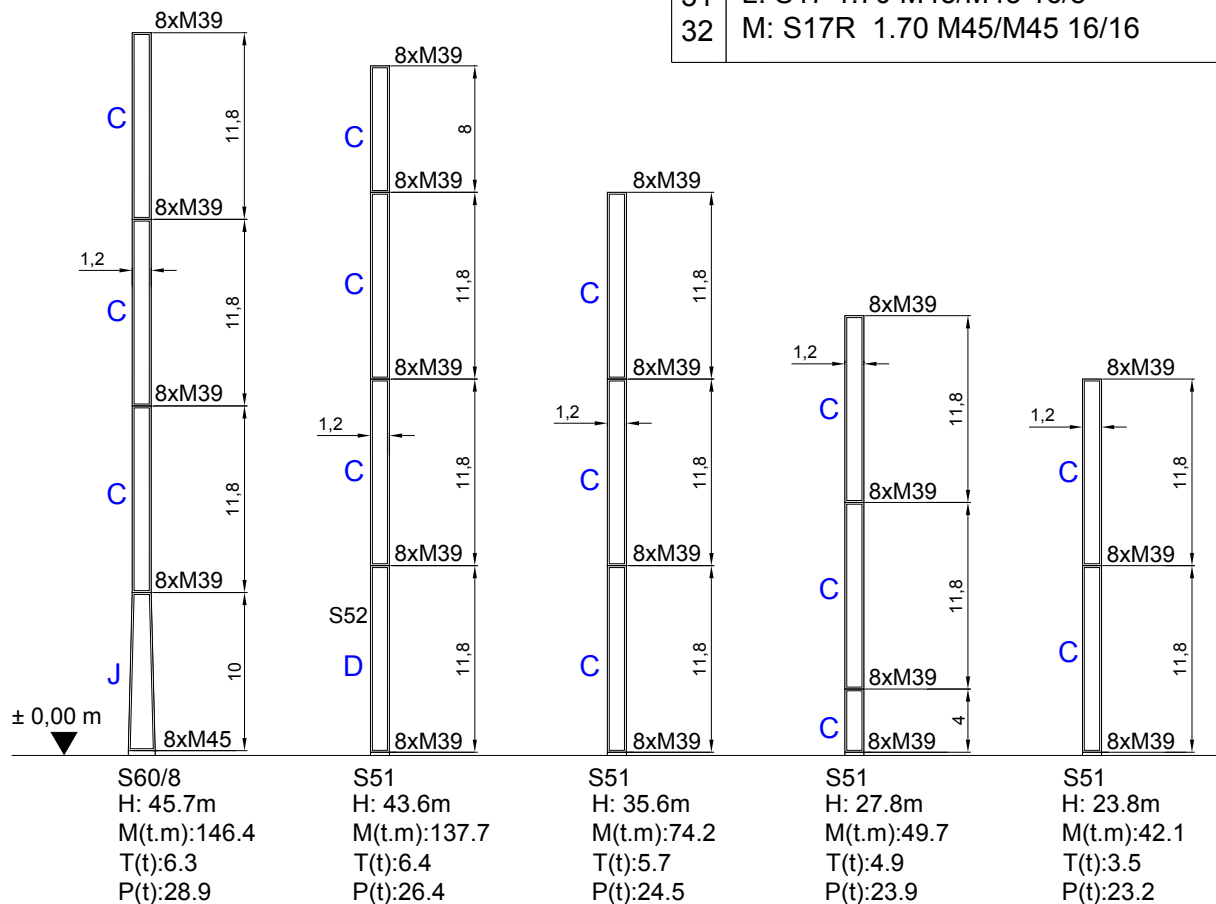


15	C: S46 1.20 M39/M39 8/8
20	D: S52 1.20 M39/M39 8/8
25	E: BOOSTER/HEM 1.20 M39/M39 8/8
25	F: CAMPANA 4m 1.20/1.50 M39/M42 8/8
38	J: CAMPANA 10m 1.20/1.70 M39/M45 8/8
33	K: S17 1.70 M45/M45 8/8
31	L: S17 1.70 M45/M45 16/8
32	M: S17R 1.70 M45/M45 16/16



Mástil / Reacciones
 Masts / Reactions
 Maste / Eckdrücke
 Mat / Réactions
 Torre / Reazioni

15	C: S46 1.20 M39/M39 8/8
20	D: S52 1.20 M39/M39 8/8
25	E: BOOSTER/HEM 1.20 M39/M39 8/8
25	F: CAMPANA 4m 1.20/1.50 M39/M42 8/8
38	J: CAMPANA 10m 1.20/1.70 M39/M45 8/8
33	K: S17 1.70 M45/M45 8/8
31	L: S17 1.70 M45/M45 16/8
32	M: S17R 1.70 M45/M45 16/16





Mecanismos
Mechanisms
Antriebe
Mécanismes
Meccanismi

15 Hp (11Kw)

	m/min	8	29	58	4	15	30
	Kg	2500	2500	1000	4000	4000	2500
	Kw	11	11	11	11	11	11
	m/min	28 / 56			28 / 56		
	Kw	1,0 / 1,8			1,0 / 1,8		
	r.p.m	0,3	0,6	0,9	0,3	0,6	0,9
	Kw	5,5			5,5		
	m/min	20			20		
	Kw	2 x 2,2			2 x 2,2		

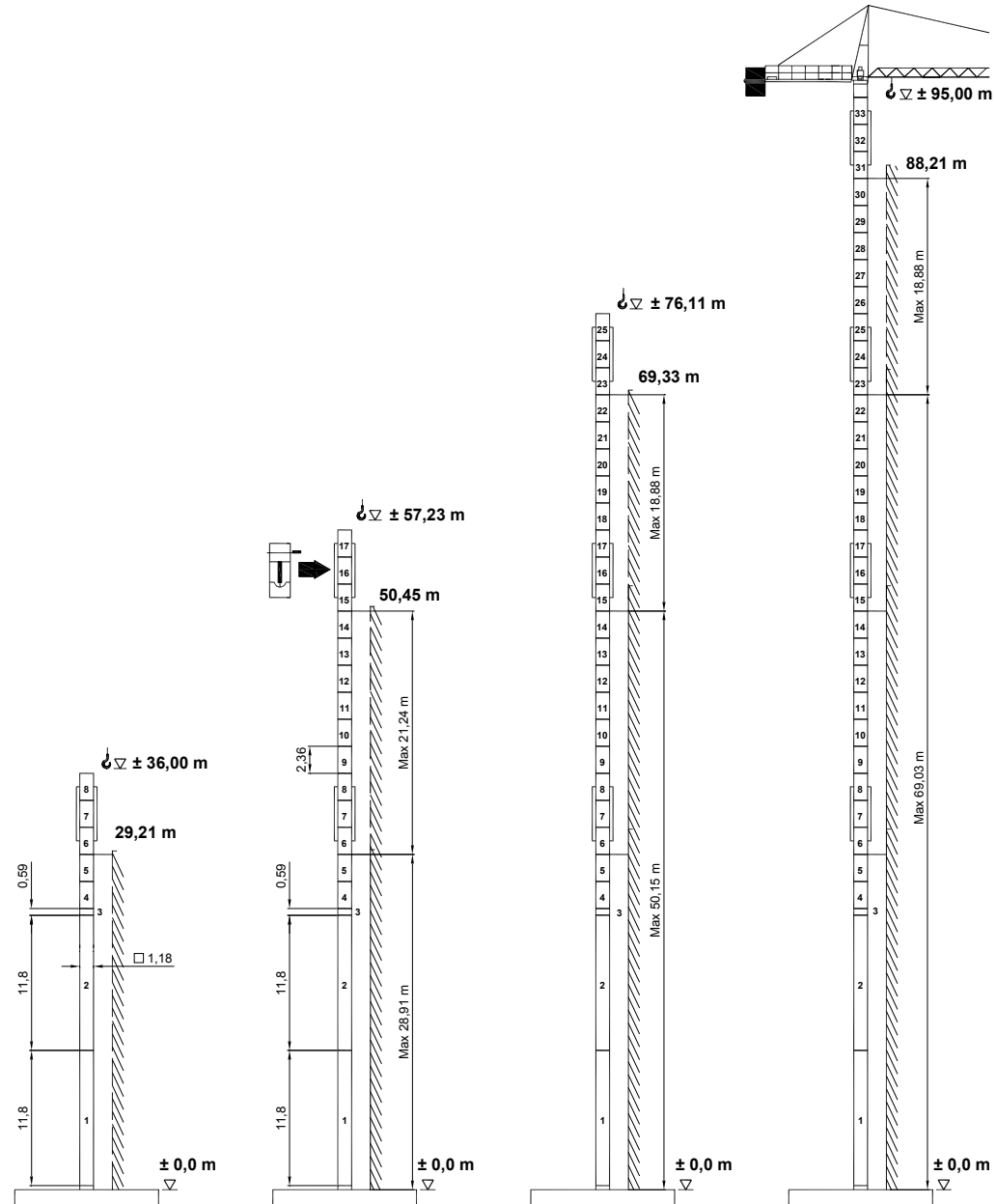
	400 V 50 Hz	20 kVA
--	----------------	--------

* 25 Hp (18,5 Kw)

	m/min	8	31	62	4	16	32
	Kg	2500	2500	1500	4000	4000	2600
	Kw	18,5	18,5	18,5	18,5	18,5	18,5
	400 V 50 Hz	31 kVA					

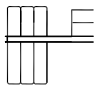
- * Opcional / Optional / Opzionale /
- Elevación / Hoisting / Heben / Levage / Sollevamento
- Distribución / Trolleying / Katzfahren / Distribution / Ditrubuzione
- Orientación / Slewing / Schwenken / Orientation / Rotazione
- Traslacion / Travelling / Schienenfahren / Translation / Traslazione

Telescopaje gruas
trepadoras
Climbing crane
Kletterkrane im
Gebäude
Télescopage sur
dalles
Gru in cavedio





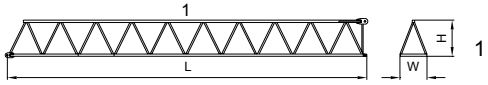
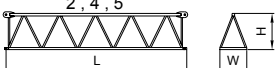
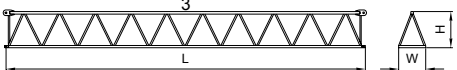
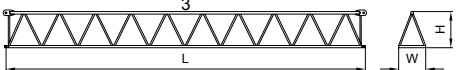
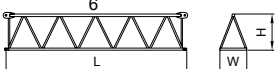
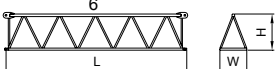
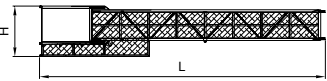
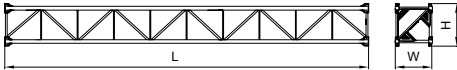
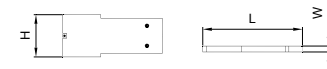
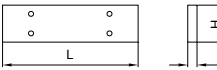
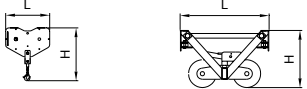
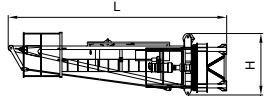
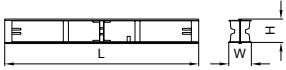

Bloque de contrapeso
Counterweight blocks
Gegengewichtsblöcke
Bloc de contrepoid
Blocco di contrappeso

	46 m			41 m			35,5 m			30 m			23,6 m		
	A	B	C	A	B	C	A	B	C	A	B	C	A	B	C
	4	-	1	3	1	-	3	-	1	3	-	-	2	-	1
	10050 Kg			8300 Kg			7750 Kg			6900 Kg			5450 Kg		

Bloque lastre de base
Base ballast block
Grundballastblöcke
Bloc de lest de base
Blocco di zavorra alla base

	24,90 m	28,90 m	36,70 m	40,70 m
	3,2 x 3,2 m	45,6 t	53 t	53 t
3,8 x 3,8 m	45,6 t	53 t	53 t	60,8 t
4,5 x 4,5 m	38 t	45,6 t	45,6 t	60,8 t



		L (m)	W (m)	H (m)	Kg	
Pluma tramo primero / Jib heel section Ausleger-Anlenkstück / Pied de flèche Settore articolato di braccio		1	11,85	1,04	1,30	1125
Elemento intermedio de pluma Intermediate jib section / Ausleger-Zwischenstück Élément interm. de flèche / Spezzone di braccio		2	5,94	0,95	1,22	450
		3	11,74	0,95	1,32	975
		4	5,94	0,95	1,22	330
		5	5,94	0,95	1,22	310
		6	5,14	0,95	1,22	240
	Contrapluma / Counter-jib Gegenausleger / Contre-flèche Controbraccio			9,28	0,22	1,64
Elemento de torre / Tower section Turmstück / Elément de mât Elemento di torre			11,8	1,2	1,38	3000
			4,0	1,2	1,38	1100
Bloque de contrapeso / Counterweight blocks Gegengewichtsblöcke / Bloc de contrepoids Blocco di contrappeso		A	2,94	0,30	1,25	2300
		B	2,94	0,18	1,25	1400
		C	1,70	0,18	1,25	850
Bloque lastre de base / Base ballast block Grundballastblöcke / Bloc de lest de base Blocco di zavorra alla base			4,4	1,2	0,3	3800
Gancho y Carro / Hook and Trolley Lasthaken - Laufkatze / Crochet - Chariot Gancio e Carrello			0,75	0,12	1,40	90
			0,96	1,10	0,62	110
Cabeza de torre / Tower head Turmspitze / Porte - flèche Testa di torre			6,5	1,8	1,7	2990
Viga principal base / Main base beam Hauptträger für fundamentkreuz Poutre de châssis de base Trave principale della base			5,72	0,67	0,65	1560
Semiviga secundaria base / Half base beam Halbträger für fundamentkreuz Semipoutre de châssis de base Semitrave secundaria della base			2,77	0,45	0,665	1500

ESPECIFICACIONES SUJETAS A MODIFICACIONES SIN PREVIO AVISO.
Specifications subject to modification without notice.
Obiges kann ohne berstaendigung geaendert werden.
Specifications susceptibles de modification sans avis préalable.
Specifiche suscettibili di variazioni senza preavviso.

DECLINAMOS TODA RESPONSABILIDAD DERIVADA DE LA INFORMACION PROPORCIONADA.
This information is supplied without liability.
Sämtliche Angaben erfolgen ohne Gewähr.
Ces renseignements sont sans garantie.
Le indicazioni contenute si intendono salvo errori ed omissioni.



Santana UA Group LLC

www.s-bud.com.ua

Tel.: +38044 3320553. 3312332

e-mail s-bud@i.ua