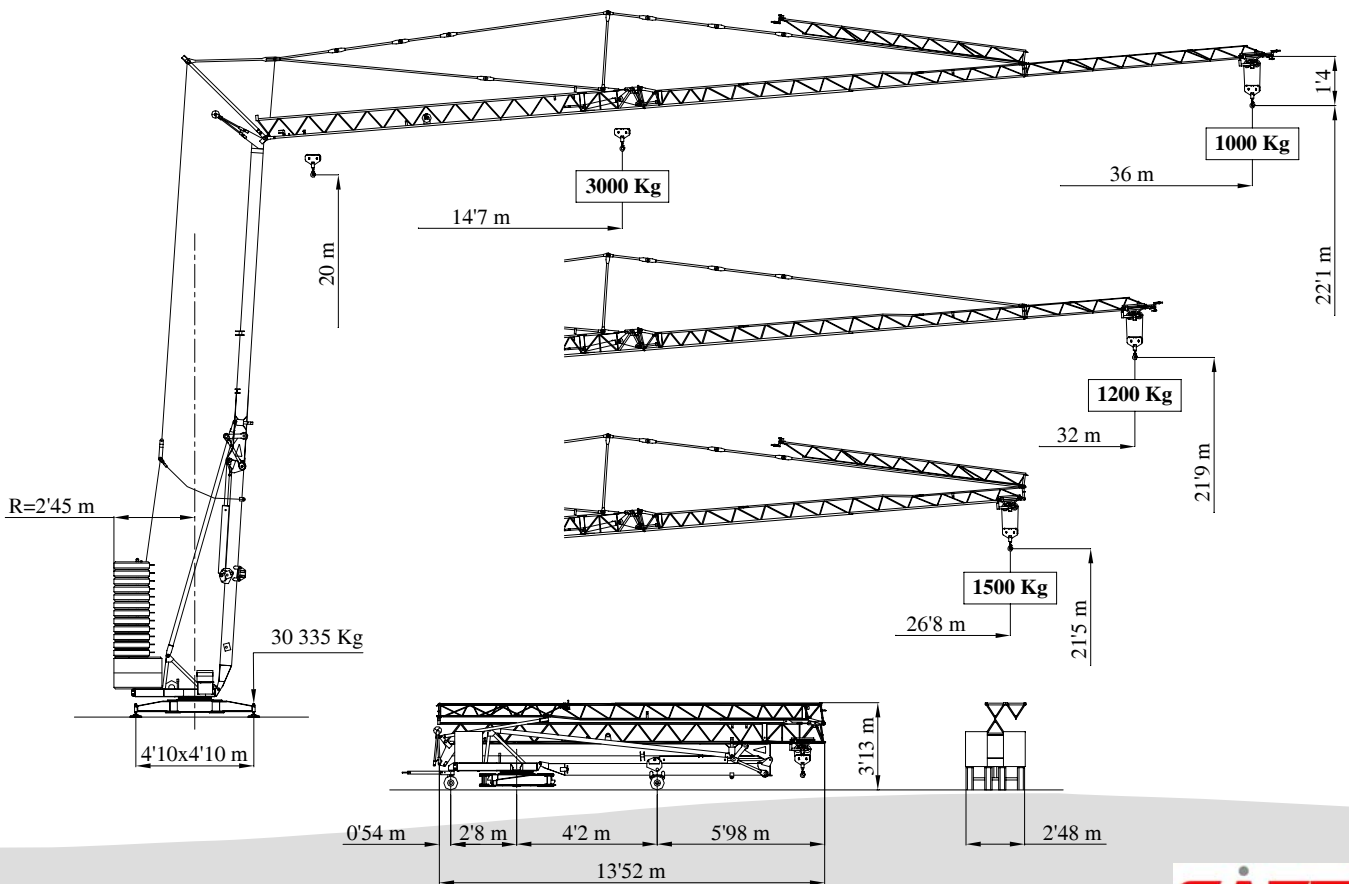
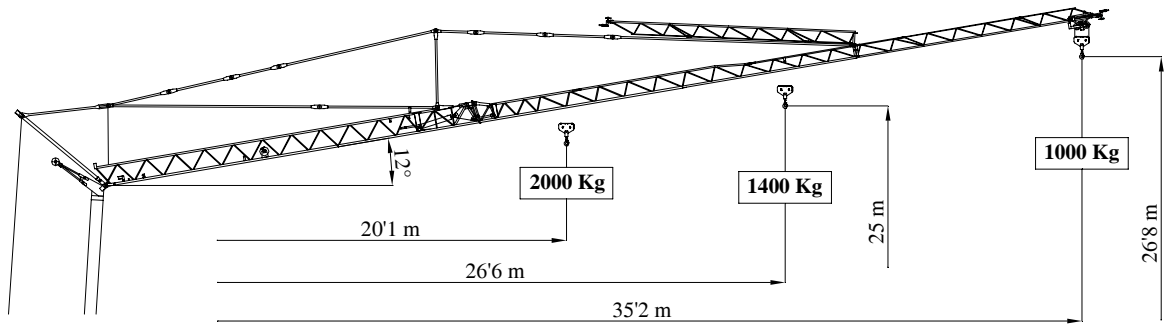
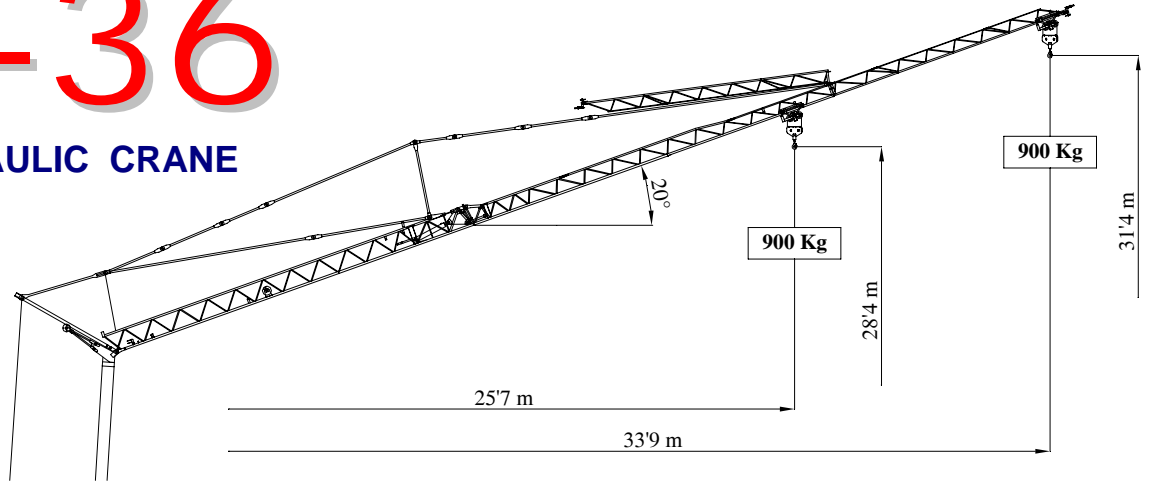




H-36

HYDRAULIC CRANE








DIN 15018








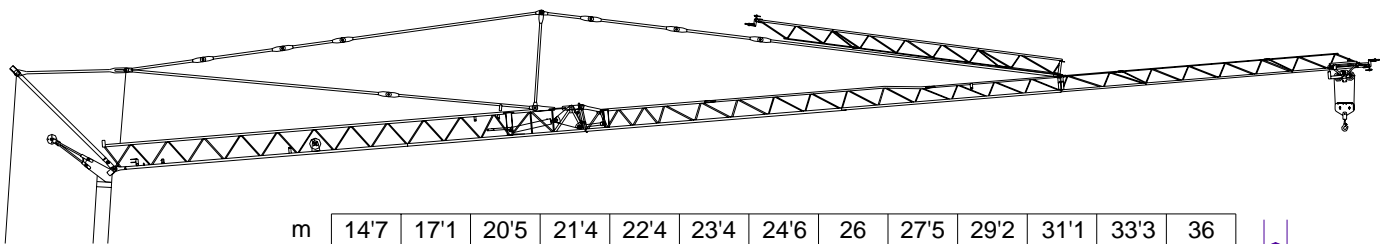
MECANISMOS / Mechanisms / Antriebe / Mécanismes / Meccanismi





					
	m/min	4	20	35	50
	Kg	3000	3000	2000	1000
	Kw	11			
	m/min	25 - 50			
	Kw	3			
	r.p.m	0	0'3	0'9	
	Kw	3'7			

	400 V 50 Hz	20 kVA
--	----------------	--------

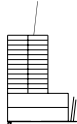
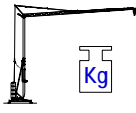
-  Elevación / Hoisting / Heben / Levage / Sollevamento
-  Distribución / Trolleying / Katzfahren / Distribution / Ditrubuzione
-  Orientación / Slewing / Schwenken / Orientation / Rotazione

DIAGRAMAS DE CARGA / Loads diagrams / Lastkurven / Courbes de charges / Diagrammi di carico



m	14'7	17'1	20'5	21'4	22'4	23'4	24'6	26	27'5	29'2	31'1	33'3	36	
Kg	3000	2500	2000	1900	1800	1700	1600	1500	1400	1300	1200	1100	1000	
m	15'1	17'5	21	21'9	22'9	24'1	25'3	26'7	28'2	30	32			
Kg	3000	2500	2000	1900	1800	1700	1600	1500	1400	1300	1200			
m	15'1	17'6	21	22	23	24'1	25'4	26'8						
Kg	3000	2500	2000	1900	1800	1700	1600	1500						
m	-	-	20'1	21	21'9	23	24'1	25'4	26'9	28'6	30'5	32'7	35'2	
Kg	-	-	2000	1900	1800	1700	1600	1500	1400	1300	1200	1100	1000	

PESO / Weight / Gewicht / Poids / Peso

	1 340 Kg x n.12 + 2 000 Kg x n.4	24 080 Kg		16 390 Kg
---	--	-----------	---	-----------

SISTEMAS FORZA, S.L.

Ctra. de Beniaján, Km. 5 • 30570, Beniaján – MURCIA (Spain)
Telf.: (+34) 968 83 70 81, Fax: (+34) 968 83 70 82

ESPECIFICACIONES SUJETAS A MODIFICACIONES SIN PREVIO AVISO.
Specifications subject to modification without notice.
Obiges kann ohne berstaendigung geaendert werden.
Specifications susceptibles de modification sans avis préalable.
Specifiche suscettibili di variazioni senza preavviso.